



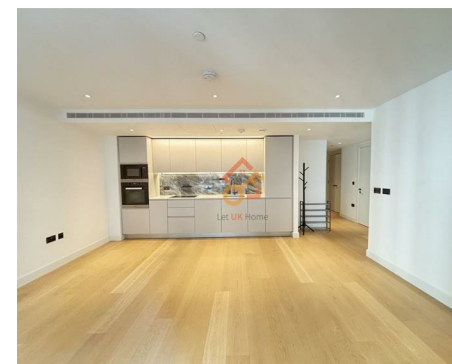
Let **UK** Home

1 Bedrooms

Flat

Located in London

£2,900 Per Month



info@letukhome.co.uk

<https://www.letukhome.co.uk/>

01795 358 886



Fountain Park Way London

W12 7HZ



Let UK Home are excited to offer this spectacular 1 bedroom apartment of White City Living.

This delightful property offers a perfect blend of comfort and modern living, making it an ideal choice for individuals or couples seeking a stylish urban retreat.

This flat features a well-appointed reception room that provides a welcoming space for relaxation and entertainment. The bedroom is thoughtfully designed to ensure a peaceful night's sleep, while the bathroom is equipped with contemporary fixtures, offering both convenience and style.

Residents of this exceptional development will benefit from concierge service, cinema room, swimming pool, the gym, The spa, sauna & steam room, co-working space, etc.

The Bowery Apartments are situated in a lively area, surrounded by a variety of local amenities, including shops, cafes, and parks, ensuring that everything you need is just a stone's throw away. The excellent transport links nearby make commuting to central London a breeze, allowing you to enjoy the best of city living while returning to your tranquil abode.

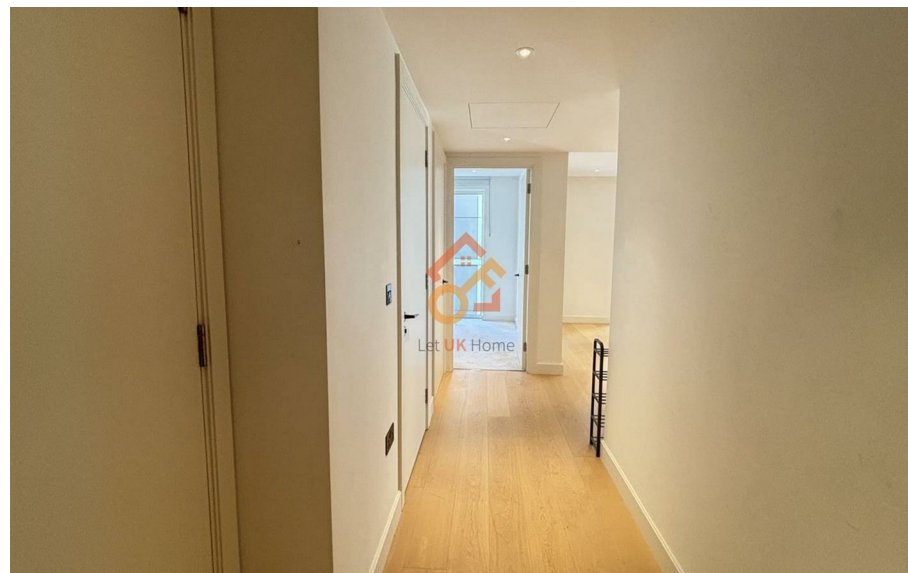
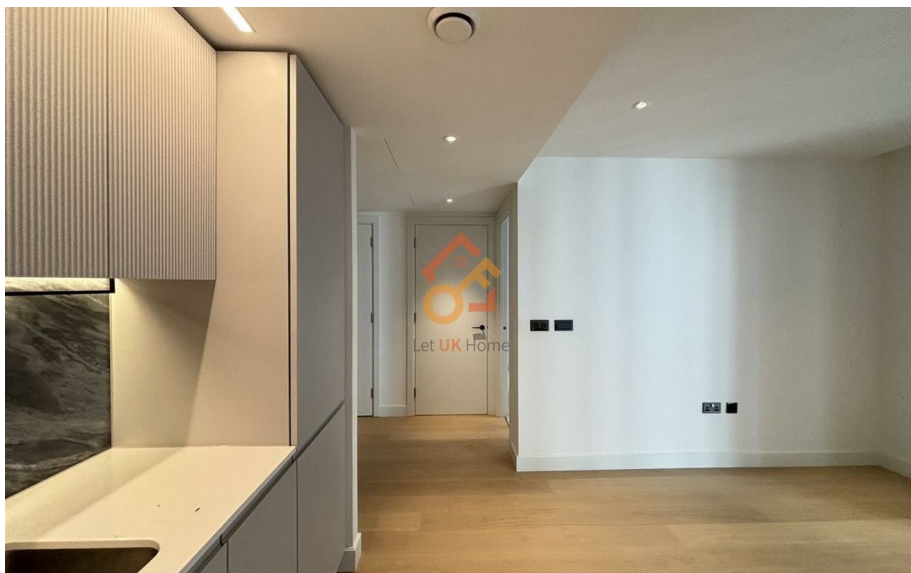
This property is not just a flat; it is a home that offers a unique opportunity to experience the dynamic lifestyle that London has to offer. Whether you are a first-time buyer or looking to invest, Bowery Apartments presents a wonderful opportunity to own a piece of this vibrant city. Do not miss the chance to make this lovely flat your own.

Fountain Park Way London

£2,900 Per Month



- 4th Floor
- The Gym
- Cinema & Game Room
- Concierge Service
- Co-working Space
- The Spa
- Swimming Pool
- Sauna & Steam Room
- 24h Security





Internal measurements	50.5 m ²	544 sq ft
External measurements	5.3 m ²	57 sq ft
Kitchen / Living / Dining	5.11 x 4.69 m	16 ft 9" x 15 ft 4"
Bedroom 1	3.32 x 2.90 m	10 ft 10" x 9 ft 6"
Balcony	3.61 x 1.47 m	11 ft 10" x 4 ft 10"

FLOORS A0206, A0306, A0406, A0506, A0606, A0706, A0806, A0906, A1006, A1106



Let **UK** Home

3F 2 Eastbourne Terrace
Paddington
London
W2 6LG

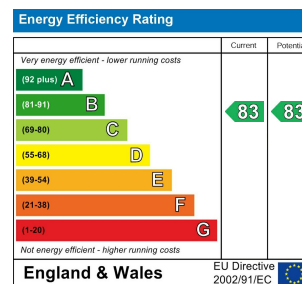
01795 358 886

info@letukhome.co.uk

Council Tax Band: E

Local Authority:

Agents Note: Whilst every care has been taken to prepare these particulars, they are for guidance purposes only. All measurements are approximate and are for general guidance purposes only and whilst every care has been taken to ensure their accuracy, they should not be relied upon and potential buyers/tenants are advised to recheck the measurements.



<https://www.letukhome.co.uk/>